

## Anti-HEL (Hen Egg Lysozyme) Human IgG2 isotype control

**Catalog No.** ■ LT12032, 1 mg, PBS, pH7.4

**Description** ■ Anti-HEL (Hen Egg Lysozyme) Human IgG2 isotype control (whole molecule)

**Ig Subclass** ■ Human IgG2, Kappa

**Host Species | Isotype** ■ Mouse | Human IgG2

**Origin** ■ CHO-S cell

**Application** ■ The anti HEL (Hen Egg Lysozyme) IgG isotype control antibodies were expressed in CHO-S cells and purified with protein A affinity column. The isotype control antibodies can be used as negative controls to differentiate non-specific background signal from your target antibody signals. Whole molecule immunoglobulins may also be used as standard protein or coating protein in ELISA, Western-Blot, immunofluorescence (IF), immunohistochemistry (IHC), immunoprecipitation (IP), and flow cytometry (FACS). This product is also suitable for various in vitro and in vivo studies which require low endotoxin level. LifeTein's isotype control proteins were produced under stringent endotoxin control conditions of <0.5 EU/μg.

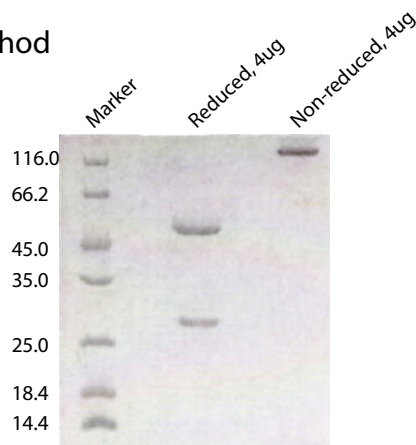
**Quality Control** ■ Endotoxin level: <0.5 EU/mg by the LAL method  
Purity: >95% by HPLC and SDS-PAGE

**Purification Method** ■ Protein A affinity column

**Concentration** ■ 1 mg, in 20 mM PBS, pH7.4

**Conjugation** ■ Unconjugated

**Storage** ■ Store at -80°C in PBS for up to 2 years. Reconstitute the lyophilized antibody with deionized water (or equivalent) to a final concentration of 1mg/ml. Aliquot to avoid repeated freeze-thaw cycles.



SDS-PAGE Analysis